

# PMG

## SAFETY

— EST 2000 —

**YOUR PARTNERS IN SAFETY**

DOWNLOAD  
OUR DIGITAL  
CATALOG





# TABLE OF CONTENTS

**2-3** FEATURED PRODUCTS

**4-15** GUARDIAN

**16-17** REID LIFTING

**18-21** GfG

**22-29** PIP

**30-31** IMPACTO

**32-37** JUSTRITE SAFETY

**38-41** MELTBLOWN

**42-43** TUFF BUILT

**44** VALUE ADDED SERVICES



## MaxiCut® Ultra™

Seamless Knit Engineered Yarn with Premium Nitrile Coated MicroFoam Grip on Palm & Fingers; A4 Cut; Sizes: XS-2XL

**44-4745D**



## MaxiCut® Ultra™

Seamless Knit Engineered Yarn with Premium Nitrile Coated MicroFoam Grip on Palm & Fingers - Touchscreen Compatible; A5 Cut; Sizes: XS-2XL

**44-5745E**



## MaxiCut® Ultra™

Seamless Knit Engineered Yarn with Premium Nitrile Coated MicroFoam Grip on Palm & Fingers - Touchscreen Compatible; A6 Cut; Sizes: XS-2XL

**44-6745F**



## Lithium-Ion Battery Charging Cabinet, 2kWh TECE, 2 Doors, Manual Close, Gray

Ideal for charging and temporary storage of lithium-ion batteries. 2kWh TECE maximum total capacity - includes 8-receptacle power strip. Heat-reactive label changes colors when external temperatures reach 120° Fahrenheit. Shelf capacity: 65 lbs of evenly distributed weight. Cabinet Exterior Dimensions: 24"h x 43"w x 18"d

**231703-1**



SCHEDULE A

**SITE**

**SAFETY VISIT**  
WITH OUR TEAM





## B7-Comfort Full Body Harness

Comfort Harness, Waist Pad, Back and side D-rings, Quick Connect Chest & Tongue Buckle Leg Straps

**3740090 (XS) 3740093 (L)**  
**3740091 (S) 3740094 (XL)**  
**3740092 (M) 3740095 (XXL)**



## A5 Concrete Expansion Anchor

Expanded Connection Loop, Clear View Cable Protection, Ergonomic Thumb Rest, Easy Access Labels, Aluminum Trigger, Dual Expansion Shoes, 5,000 lb Minimum Breaking Strength

**1400052**



## C7 Cable Climbing Sleeve

Built-in energy absorber and anti-panic locking cam, the C7 offers safe and effective arresting properties in the event of a slip or fall. One-handed operation.

**25034**







**360 DEGREES OF HEIGHT SAFETY**  
Our height safety eco-system

- END-TO-END CUSTOMER SERVICE
- FALL PROTECTION
- DROPPED OBJECT PREVENTION
- FOREIGN MATERIAL EXCLUSION
- ENGINEERED SYSTEMS
- CERTIFIED TRAINING

## Height Safety. Simplified.

When it comes to height safety, we think simple is better. This drives all that we do.

To us, simple means one sole focus, one trusted partner, and complete protection from every angle. We call this 360-degree height safety.



## B7 - Comfort Harness

Description	Chest Buckle /Leg Buckle	XS	S	M	L	XL	2XL
B7-Comfort Harness	QC/QC	3740000	3740001	3740002	3740003	3740004	3740005
B7-Comfort Harness	QC/TB	3740006	3740007	3740008	3740009	3740010	3740011
B7-Comfort Harness, Waist Pad, Side D-Rings	QC/QC	3740084	3740085	3740086	3740087	3740088	3740089
B7-Comfort Harness, Waist Pad, Side D-Rings	QC/TB	3740090	3740091	3740092	3740093	3740094	3740095

## Series 1 Harness

PT chest, TB legs

- 37004 (XS/S)**
- 37005 (M/L)**
- 37006 (XL/2XL)**
- 37007 (3XL)**



PT chest, TB legs, Back & Side D-Rings

- 37012 (XS/S)**
- 37013 (M/L)**
- 37014 (XL/2XL)**
- 37015 (3XL)**



## Series 3 Harness

PT chest, TB legs

- 37104 (XS/S)**
- 37105 (M/L)**
- 37106 (XL/2XL)**
- 37107 (3XL)**



Waist Pad, PT chest, TB legs, Back & Side D-Rings

- 37192 (XS/S)**
- 37193 (M/L)**
- 37194 (XL/2XL)**
- 37195 (3XL)**



Waist Pad, QC chest, TB legs, Back & Side D-Rings

- 37200 (XS/S)**
- 37201 (M/L)**
- 37202 (XL/2XL)**
- 37203 (3XL)**



## Series 5 Harness

QC chest, QC legs

- 37332 (XS/S)**
- 37333 (M/L)**
- 37334 (XL/2XL)**
- 37335 (3XL)**



Waist Pad, QC chest, TB legs, Back & Side D-Rings

- 37368 (XS/S)**
- 37369 (M/L)**
- 37370 (XL/2XL)**
- 37371 (3XL)**



## Suspension Trauma Straps

**10733**



## Build Your Custom Harness

Scan here to create your full body harness using Guardian's unique Harness Customization tool.





## ANSI Z359.14-2021 - Effective August 1, 2023

Effective August 01, 2023 - Class A & B devices have been replaced with Class 1 and Class 2.

### Class

# 1

Anchor at or  
above dorsal D-ring

### Class 1:

- For use on overhead anchorages AT or ABOVE the dorsal D-ring
- Subject to a maximum free fall of 2 feet



### Class

# 2

Anchor above or  
below dorsal D-ring

### Class 2:

- For use when overhead anchorages are not feasible and anchorages are ABOVE or BELOW the dorsal D-ring
- Subject to a maximum free fall of 6 feet
- Must be edge rated



▶ SRL Devices manufactured prior to August 01, 2023 can remain in service. All devices must meet the manufacturers' inspection requirements and be inspected by a competent person.

	OLD ANSI Z359.14-2014		NEW ANSI Z359.14-2021
SRD Class	Class A	Class B	Class 1 & Class 2
Maximum Arrest Force	1,800 lb		1,800 lb
Average Arrest Force	1,350 lb*	900 lb*	1,350 lb*
Arrest Distance	24 inches	54 inches	42 inches

\* Note: During hot, cold, and wet conditioned tests, average arrest force limit is increased.



## Class 1 SRLs

### ANSI Z359.14-2021

Class  
**1**  
Anchor at or  
above dorsal D-ring

### CR5 SRL

Web SRL-P w/ Class 1, 6 ft Web Lifeline

- 1400198 (Steel Snap Hook)**
- 1400199 (Steel Rebar Hook)**
- 1400200 (Steel Tie-Back Hook)**
- 1400201 (Aluminum Snap Hook)**
- 1400202 (Aluminum Rebar Hook)**

Dual Web SRL-P w/ Class 1, 6 ft  
Web Lifeline

- 1400203 (Steel Snap Hook)**
- 1400204 (Steel Rebar Hook)**
- 1400205 (Steel Tie-Back Hook)**
- 1400206 (Aluminum Snap Hook)**
- 1400207 (Aluminum Rebar Hook)**

### Velocity Cable SRL

Galvanized cable SRL with swivel  
indicating snap hook, swivel top,  
includes carabiner

- 42000 (16')**
- 42001 (20')**
- 42002 (30')**
- 42003 (50')**

### Halo SRLs

Halo Series web retractable lifeline  
with carabiner and swivel top

- 10900 (11')**

Halo Series web retractable lifeline  
with swivel top/hook & carabiner

- 10909 (20')**

Halo Series galvanized cable  
retractable lifeline with swivel  
top/hook & carabiner

- 10910 (20')**
- 10915 (30')**

### CR3 SRL

SRL, CR3-33, Class 1, single,  
galvanized cable, indicating  
steel snap hook

- 4200220 (33')**



## Class 2 SRLs

### ANSI Z359.14-2021

Class  
**2**  
Anchor above or  
below dorsal D-ring

### CR3-Edge

8 ft Galvanized Lifelines

- 4200200 (Steel Snap Hook)**
- 4200201 (Aluminum Snap Hook)**
- 4200202 (Steel Rebar Hook)**
- 4200203 (Aluminum Rebar Hook)**
- 4200204 (Steel Tie-Back Hook)**

Dual SRL-P

- 4200205 (Steel Snap Hook)**
- 4200206 (Aluminum Snap Hook)**
- 4200207 (Steel Rebar Hook)**
- 4200208 (Aluminum Rebar Hook)**
- 4200209 (Steel Tie-Back Hook)**

10 ft Galvanized Steel Lifelines

- 4200007 (Indicating Steel Snap Hook)**

CR3-Edge 33 ft Galvanized Steel Lifelines

- 4200221 (Non Indicating Swivel Steel Snap Hook)**

### Halo Cable SRL-LE

Halo LE HD galvanized cable  
retractable lifeline with swivel top/  
hook, shock pack, & carabiner

- 10920 (20')**
- 10925 (30')**
- 10927 (50')**



## Stretch Lanyard

4.5' - 6' Stretch Single Leg internal shock absorbing lanyard in a bungee style with snap hook

**01295**

4.5' - 6' Stretch Dual Leg internal shock absorbing lanyard in a bungee style with steel rebar hooks

**01298**



## Halo Cable SRL-LE

Halo LE HD galvanized cable retractable lifeline with swivel top/hook, shock pack, & carabiner

**10928 (65')**



## Halo Cable SRLs

Halo Series galvanized cable retractable lifeline with swivel top/hook & carabiner

**10917 (50')**

**10918 (65')**

## External Shock Lanyard

6' Single leg external shock absorbing lanyard, steel snap hook

**01220**

6' Dual leg external shock absorbing lanyard, steel rebar hooks

**01231**



## Adjustable Chain Positioning Lanyard

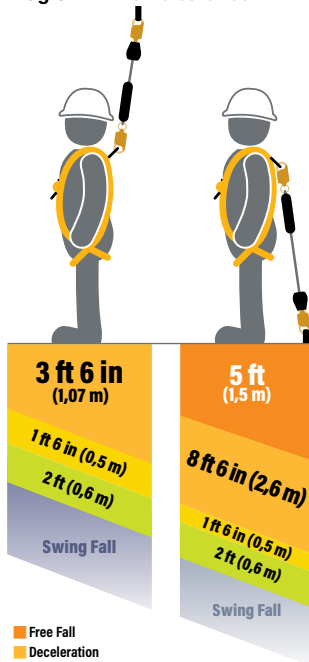
Swivel rebar positioning device chain assembly, double legs

**01616 (24")**



## Fall Clearance

Diagram A - Fall Clearance

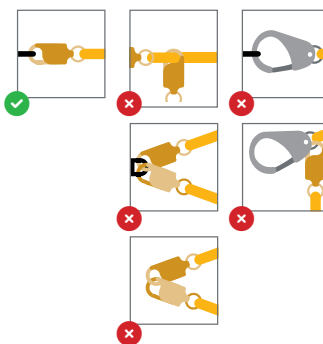


**WARNING!** Eliminate Swing Fall whenever possible! If swing fall exists, always account for additional fall clearance.

**CAUTION!** Fall clearance calculation shown is based on a standing worker falling directly in-line with anchor point.

**SAMPLE CALCULATION ONLY.** Always refer to connector instructions for product-specific clearance information.

Diagram B - Connections



Scan the qr code for the 360 Fall Clearance Calculator.



## Beamer® 2000

Trailing Beam Anchor, Fits 3.5" to 14" beams up to 1.25" thick

**00101**  
(Steel)



## Reusable Temper Anchor

Temporary roof anchor for flat through 12/12 pitch roofs

**00455**  
(Wood, Metal, Concrete)



## Bull Ring Anchor

Removable roof anchor

**00484**  
(Wood)



## CB-12 Anchor Post

Roof Anchor

**00645**  
(Wood, Metal, Concrete)



## Pitch Pro

Slotted roof anchor, black steel, 1/pk

**10540**  
(Also available in Brown (10541), Gray (10542) and 25/pk - Black (10543); Brown (10544), Gray (10545))



## Premium Cross Arm Strap

Cross arm strap with large & small d-rings

**10787 (6')**  
(Additional lengths available)



## Swivel Anchor

10K with 5/8" by 6" expansion anchor, 130-420 lb user capacity

**10010**  
(Concrete)



10K with 5/8" by 4" bolt, with lock washer and nylon nut, 130-420 lb user capacity

**10011**  
(Steel)



10K, no bolt, 130-420 lb user capacity

**10012**  
(Concrete, Steel)



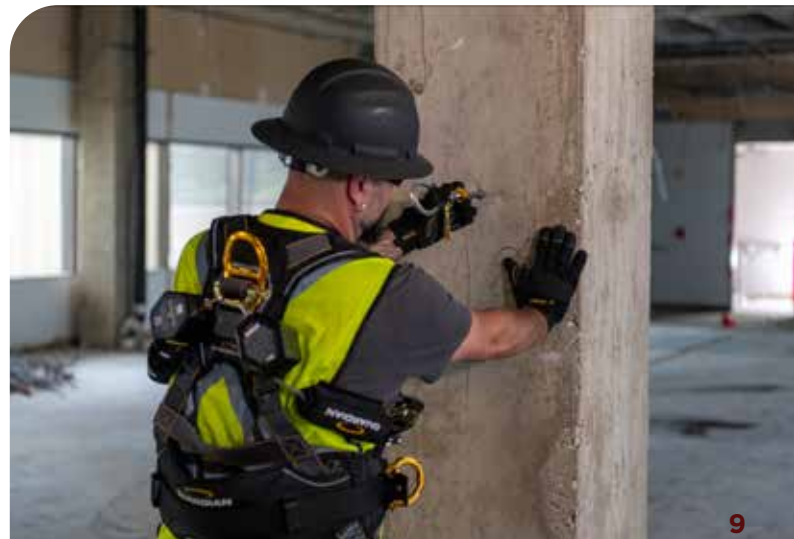
10K and steel weld-on puck assembly, yellow zinc finish Includes anchor mounting bolt and washer, 130-420 lb user capacity

**10015**  
(Steel)



## A5 Concrete Expansion Anchor

**1400052**  
(Concrete)



## Retractable Horizontal Lifeline

60' with galvanized 1/4" cable

**04660**



## Debris Netting

Orange 48" net PE 150' Roll

**70001**



## HTL Horizontal Lifeline

Horizontal Temporary Lifeline with tensioner, (2) 2.28" ID O-rings, (2) 6' cross arm straps, (2) carabiners in a 00768 Small Ultra Sack Bag

**04663 (30')**

**04664 (60')**

**04665 (100')**



## Bucket of Safe-Tie

Complete Roofer's Kit Includes: temper anchor, 50' vertical lifeline assembly, Velocity Harness / 5 Gal yellow bucket

**00815**



## Web HLL - Temporary Horizontal Lifeline

65' webbing HLL Kit Includes: ratchet tensioner, (2) 6' cross arm straps, (2) carabiners, (2) O-rings, (1) tether lanyard, (1) storage bag

**04662**



## Quadro Horizontal Lifeline

Quadro 4 Man HLL 82 ft temporary rope lifeline. Includes rope/tensioner, (4) anodized aluminum o-rings, (2) steel carabiners, (2) 01643 cross arm straps, drawstring bag.

### Key Features:

- Allows up to four workers in Fall Arrest

**30800**





## Parapet Clamp for Guardrail System

Fits 4"-24" wall width, includes 15175 (42" Guardrail Post)

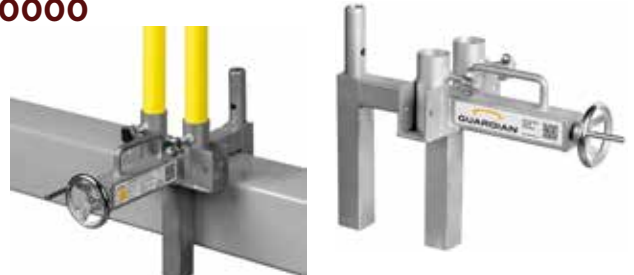
**15170**



## Trench Box G-Rail Receiver

The Trench Box G-Rail Receiver is a great solution for keeping workers safe while working near exposed or deep trenches. Its unique design offers easy installation onto a variety of trench box walls and configurations across the job site. With a simple to use and precise adjustment wheel, guardrails can be attached quickly and easily to trench boxes for added safety.

**1400000**



## C-Slab Grabber

Use with 2x4, 2x6 or cable - Max spacing 8' apart, Color: Red

**15500**



## G-Rack Guardrail Storage System

The G-Rack Guardrail Storage System takes the hassle out of guardrail inventory and logistics. This stackable, durable and adaptable storage solution allows guardrails to be moved and stored in a safer and more organized way. G-Racks come fully assembled and ready to use.

**1400611**



## Guardrail

Free Standing Guardrail System

**15183 (6' Safety Yellow Guardrail)**

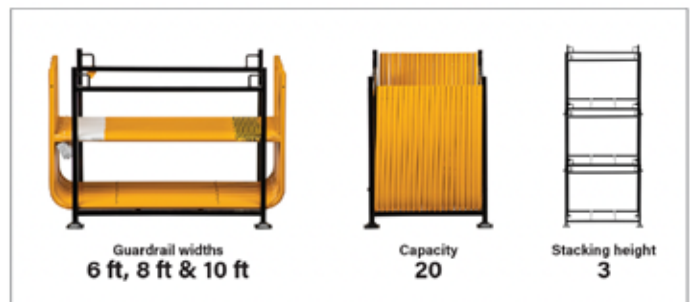
**15182 (8' Safety Yellow Guardrail)**

**15181 (10' Safety Yellow Guardrail)**

**15202 (12' Safety Yellow Guardrail)**

**15180 (Galvanized Guardrail Baseplate)**

**15178 (Multi-Directional Baseplate)**



## C7 Cable Climbing Sleeve

- Innovative Design: Mitigates nuisance lockup and provides excellent climbability
- Easy, One-Handed Operation: To attach and detach to cable
- Aluminum frame and carabiner: For reduced weight
- Red Safety Button: To indicate proper attachment
- Bronze Bearings: For added durability and longevity
- Anti-Panic Lockup: Added security while climbing
- Integrated Shock Absorber: Compact force management system
- Meets ANSI Z359.16: When used with Guardian Cable Climbing System. Qualified for use with 3/8", 1 x 7 strand, galvanized steel solid core cable
- Integrated Energy Absorber

**25034**



## Cable Climbing System

The Guardian Cable Climbing System offers users easy installation with superior energy-absorbing properties making it an ideal personal fall arrest system (PFAS) solution for vertical applications. Systems include: upper and lower brackets, intermediate cable guides, cable, and all mounting hardware.

**1400305**

(available in multiple sizes)



## Safe-T™ Ladder Extension System

**10800**

**10798 (Self-Closing Ladder Gate for #10800)**





## Quick-Switch® Tool Transfer Station

**42145** (Tool Transfer Station only)

**42146** (Tool Transfer Station Kit with 2 Bungee Transfer Keys and 5 Links)

**42147** (Tool Transfer Station Kit with 2 Retractable Transfer Keys and 5 Links)



## Double D-Rings with Anti-Rotation Captive Pin

2 of each size 8 total of the double dee rings

**DBLDKIT**



## Quick-Switch® Link and Dock Pack

**QSS-R**



## Quick-Switch® Wrist Strap

**QSWSCNCH-R**



## Quick-Switch® Bungee Transfer Key

**QSBNGEXT-R**



## Bungee Style Tether

Tooth tether, S/S screw gate/  
HD cord

**BNGEXT1C10XT-R**

(other sizes available)



## Cold Shrink Series

Cold shrink kit, 2 pcs ea. of the 1X2,  
14X225, 16X25 & 21X275

**COLDSKRIT**



## DRILL BOOT®

**DRLBOOTLG-R**



## Retail Pack Tape Measure Sleeve

**TAPESLV-R**



## Quick-Switch Bolt Bag & Tool Holder

**QSBOLT**

Bag

**TTB300BNLBZPHLP**

100lb Dual Rated Swivel  
Free Tethered Tool Bag  
12" dia. x 15", Zipper Top



## Tool Tethering Trade Kits

Specifically designed for use by construction workers, scaffolders, and ironworkers, to accommodate tools commonly used in those trades.

**99-11-0125, 99-11-0126, 99-11-0127**

(parts shown left to right)





# TRAINING COURSE GUIDE

*\*Course length can change dependent on content.*



## COURSES

**COMPETENT PERSON** | 16 HOURS

**COMPETENT PERSON REFRESHER** | 8 HOURS

**EM385 COMPETENT PERSON** | 24 HOURS

**COMPETENT EQUIPMENT INSPECTOR** | 6 HOURS

**COMPETENT PERSON TRAIN THE TRAINER** | 40 HOURS

**FALL PROTECTION AWARENESS** | 2\* HOURS

**AUTHORIZED PERSON** | 4 HOURS

**AUTHORIZED RESCUE** | 8 HOURS

**CONFINED SPACE AWARENESS** | 8 HOURS

**CONFINED SPACE NON-ENTRY RESCUE** | 16 HOURS

**CONFINED SPACE RESCUE** | 24 HOURS

**DROPPED OBJECT PREVENTION AWARENESS** | 4 HOURS



Scan the qr code for full course descriptions and more training information.

## SERVICES

- OSHA Compliant Design of Systems
- Professional Engineering (PE)
- Custom Steel Fabrication
- Certified System Installation
- Annual Inspection and 5-Year Re-Certifications
- Pull Testing of Anchors

## PRODUCTS

- Guardrails, Fixed and Non-Penetrating
- Cable-Based Systems, Single and Multi-Span
- Enclosed Track Systems
- Rigid Rail Systems
- Single Point Anchors
- Access Platforms





# EDGE PROTECTION BARRIER SYSTEM

Passive Fall Prevention Solutions



**EASY INSTALL  
& REMOVAL**



**VERSATILE  
& REUSABLE**



**CUSTOM COLOR  
& LOGO**



**PLANNING  
& LOGISTICS**



## PRODUCTS



### Barrier

4 ft 3", 6 ft 4" and 8 ft 6" lengths.



### Clamp 550

Non-penetrating clamp for connecting to slabs, stairs, parapets and other structural elements.



### Precast Concrete Socket



### Standard Post

Used in conjunction with sockets and brackets (not required with compression post).



### Ground Support Plate

Can be used as part of a warning line or guardrail system.



### Sheet Pile Bracket

Attaches to steel sheet pile using a single screw clamp and no additional tools.

### Compression Post

Non-penetrating post used between floors.



### Post Foot

Single bolt connection to concrete, steel, or wood substrates.



### Balcony Bracket

Clamp-on connection designed specifically for balcony edge protection.

In fall hazard protection, sometimes one size doesn't fit all. Whatever your specific needs or deadline, our in-house team can help. We design, engineer, fabricate and install custom solutions, and we've been doing it for over 30 years - on more than 3,000 projects. Whatever the project, your workers' convenience and safety is our top priority.

**+1 (800) 466 6385**

**[engineered.systems@guardianfall.com](mailto:engineered.systems@guardianfall.com)**

Tested in the **United States**



## Porta-Gantry Rapide

PORTAGANTRY *RAPIDE* is a height-adjustable, foldable aluminum gantry designed for rapid deployment. Capable of a load lifting capacity of up to 2200lb.

### Key Features:

- OSHA and ANSI Z359.18-17 compliant for fall protection applications
- Can support goods and personnel lifting;
  - Goods lifting capacity of up to 2200lb
  - Personnel lifting capacity of up to 1100lb
  - Approved for up to 2 persons for fall protection applications

0.5T / 1100lb Max Capacity

US-PGRS20J	Porta-Gantry Rapide Small Frame up to 0.5T / 1100lb, 6'6 3/4" Beam with Castors
US-PGTZR01100	Porta-Gantry Rapide Master Link Trolley up to 1100lb
US-PGTTR01100	Porta-Gantry Rapide Double Sheave carrier up to 1100lb
US-RAPGR00032	Rapide Universal Sheave and Ball Lock Pin Set
US-RAW-B000033C1	Winch Bracket for Checkmate Personnel Winch
US-RAPGR00049	3-Way SRL Bracket for Checkmate

Available in a range of configurations and can be customized in line with specific requirements (subject to capacity rating).



Pairs with Guardian Winch & 3-Way part #s:

32201	WG01 65 ft winch
32135	50 FT 3-way galvanized cable FabXCalibre SRL, double locking aluminum carabiner (Red Housing)

## Porta-Gantry

PORTAGANTRY® is lightweight and extremely strong. This portable system can be easily assembled using just four bolts and safely lift up to 11,000lb, making it ideal for multiple applications.

### Key Features:

- OSHA and ANSI Z359.18-17 compliant for fall protection applications
- Can support goods and personnel lifting;
  - Goods lifting capacity of up to 11,000lb
  - Personnel lifting capacity of up to 5,500lb
- Approved for up to 3 persons for fall protection applications
- Beams and A-frames can be interchanged
- Ease of assembly including height and span adjustment

US-PGSS04400TC1-18B	Porta-Gantry System rated up to 4400lb - Extra tall A frames with adjustable height between 13' 2 1/2" and 19' 1/2". 18' 1/2" beam length with 15' 1/4" adjustable clear span. Comes with ratchet height adjustment and 360° swivel, loadbearing, locking castor wheels. Trolley is not included.
US-PGTGS04400 (need 3)	Gated Masterlink Trolley WLL2000kg/4400lb Gated Fit A or B Size Beam
US-RAPG000203	Snap Hook Strop Kit for TC2 and TC1 Gantry Systems
US-RAPG000204	Bag for assembly aid kit
US-RAPG000200	Assembly Aid Clamp on Kit for Gantry System

Available in a range of configurations and can be customized in line with specific requirements (subject to capacity rating).





## T-Davit

TDAVIT is lightweight, portable and has been designed to meet customer needs where the lifting and moving of equipment in tight spaces is a challenge. Offers a lifting capacity of up to 880lb in combination with a geared trolley which is able to traverse the beam, in addition to 360 degree rotation under load.

### Key Features:

- OSHA compliant and ANSI Z359 18.17 complaint and suitable for personnel lifting\*
- Capacity of up to 1320lb for goods lifting
- Personnel lifting up to 660lb
- Variety of column heights up to 86" and beam lengths for a maximum reach up to 63"
- Can be combined with our PORTABASE *H* Base and *Counterbalance* for a truly portable lifting solution

US-TDWA4A2	T-Davit Winched Column option 4 (64.75" & 80" Height of Lift), Beam Option 2 (43.75" to 47.25" Radius) up to 1100lb capacity
US-RAWB007000	Bracket Kit Guardian SRL & 50G Miller Davits Gantry I & above
US-STMG0500V2	Socket Top Mount GMS

### Pairs with Guardian 3-Way SRL #s:

10974	SRL50' 3-Way Rescue & Retrieval Retractable
-------	---



Scan here to see the full line of products.

## PortaDavit Quantum (PDQ)

PORTADAVIT *QUANTUM* is a rapidly deployable, lightweight solution to heavy lifting and lowering of goods or personnel. Weighing from just 41lb when fully assembled it can be manually operated by just one person while maintaining a lifting capacity up to 1320lb.

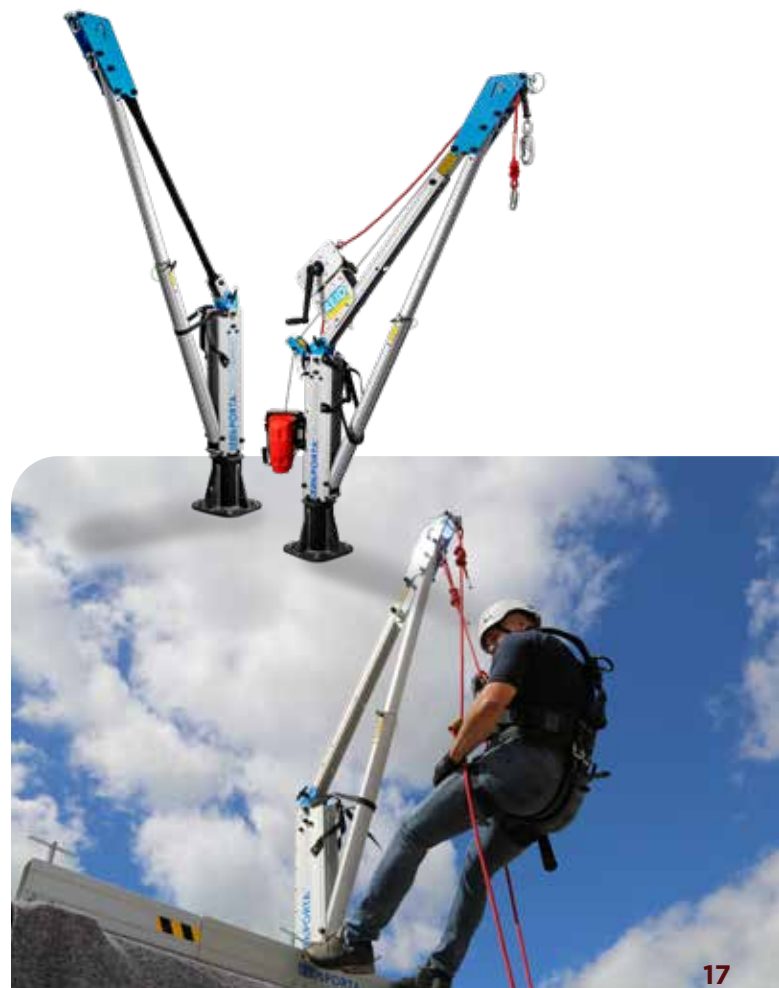
### Key Features:

- OSHA compliant
- Capacity of up to 1320lb for goods lifting
- Personnel lifting up to 660lb

US-PDQ1W	Porta-Davit Quantum Rigid Back Stay Winch Ready. 1320lb capacity, 47" max radius
US-RAWB000670	Winch Bracket Kit Checkmate Personnel to PDQ Column & Sheave
US-RAWB007010	Bracket Kit Guardian SRL & 50G Miller to PDQ Backstay (DW)
US-SFRG0500	Socket Flush Mount Resin Bond GMS

### Pairs with Guardian Winch & 3-Way part #s:

32201	WG01 65 ft winch
10974	SRL50' 3-Way Rescue & Retrieval Retractable



## Micro IV

### Features:

- Highly configurable single smart sensor design
- Full 3-year warranty on O<sub>2</sub>, CO and H<sub>2</sub>S sensors
- Event / Datalogging standard
- Programmable ceiling (3), STEL & TWA alarms
- AutoCal<sup>®</sup> automatic calibration



**Monitors:** Cl<sub>2</sub>, ClO<sub>2</sub>, CO, COCl<sub>2</sub>, ETO, H<sub>2</sub>, HCl, HCN, HF, H<sub>2</sub>S, NH<sub>3</sub>, NO, NO<sub>2</sub>, O<sub>2</sub>, O<sub>3</sub>, PH<sub>3</sub>, SiH<sub>4</sub>, SO<sub>2</sub>

Part No	Description
<b>1418-022</b>	Oxygen (O <sub>2</sub> ) Sensor / Resolution 0.1% vol. / Range 0-25% vol. / Instrument Only / 3-Year Sensor Warranty
<b>1418-027</b>	Carbon Monoxide (CO) Standard Sensor / Resolution 1 ppm / Range 0-300 ppm / Instrument Only / 3-Year Sensor Warranty
<b>1418-024</b>	Hydrogen Sulfide (H <sub>2</sub> S) Standard Sensor / Resolution 0.1 ppm / Range 0-100 ppm / Instrument Only / 3-Year Sensor Warranty

## G222E

### Features:

- Highly configurable dual channel smart sensor design
- Full 5-year warranty on O<sub>2</sub> (lead free), and 3-year on CO and H<sub>2</sub>S sensors
- Event / Datalogging standard
- Programmable ceiling, STEL & TWA alarms
- AutoCal<sup>®</sup> automatic calibration



**Monitors:** C<sub>2</sub>H<sub>4</sub>O, Cl<sub>2</sub>, ClO<sub>2</sub>, CO, COCl<sub>2</sub>, H<sub>2</sub>, HCl, HCN, HF, H<sub>2</sub>S, NH<sub>3</sub>, NO, NO<sub>2</sub>, O<sub>2</sub>, O<sub>3</sub>, PH<sub>3</sub>, SiH<sub>4</sub>, SO<sub>2</sub>

Part No	Description
<b>G222E-0334</b>	Oxygen (O <sub>2</sub> ) 5-year and Carbon monoxide (CO) (500 ppm) / Instrument Only
<b>G222E-0305</b>	Oxygen (O <sub>2</sub> ) 5-year and Hydrogen sulfide (H <sub>2</sub> S) (500 ppm) / Instrument Only
<b>G222E-3420</b>	Carbon monoxide (CO) (500 ppm) and Hydrogen cyanide (HCN) (50 ppm) / Instrument Only
<b>G222E-2341</b>	Nitric oxide (NO) (100 ppm) and Nitrogen dioxide (NO <sub>2</sub> ) (30 ppm) / Instrument Only
<b>G222E-3405</b>	Carbon monoxide (CO)(500 ppm) and Hydrogen sulfide (H <sub>2</sub> S)(500 ppm) (CO in kit is Aluminum) / Instrument Only
<b>G222E-0510</b>	Hydrogen sulfide (H <sub>2</sub> S) (500 ppm) and Sulfur dioxide (SO <sub>2</sub> ) (10 ppm) / Instrument Only
<b>G222E-0537</b>	Hydrogen sulfide (H <sub>2</sub> S) (500 ppm) and THT / Methyl Mercaptan (CH <sub>3</sub> SH) (25 ppm) / Instrument Only
<b>G222E-0300</b>	Oxygen (O <sub>2</sub> ) (40XLF Lead Free) 0.1% vol. res. / 0 - 25% vol. range / Instrument Only
<b>G222E-3400</b>	Carbon monoxide (CO) 1 ppm res. / 0 - 500 ppm range / Instrument Only
<b>G222E-0500</b>	Hydrogen sulfide (H <sub>2</sub> S) 1 ppm res. / 0 - 500 ppm range / Instrument Only

## G450

### Features:

- Compact and robust 1 to 4 sensor design
- Interchangeable battery packs for up to 24 hours of continuous operation
- Three color back light for easy identification of alarm conditions
- Standard event and datalogging
- Bright, flashing LED alarm lights visible from 360°
- Optional built-in "flash light" LEDs
- Full 3-year warranty on all sensors\*
- Highly water resistant (IP 67)
- Optional motorized smart pump operates in diffusion or sample-draw mode
- MSHA Approved G450 and Smart Pump are available in all 3 configurations (alkaline, rechargeable and flashlight rechargeable)



**Monitors:** LEL, O<sub>2</sub>, CO, H<sub>2</sub>S

Part No	Description
<b>G450-11410</b>	LEL, O <sub>2</sub> , CO, H <sub>2</sub> S Sensors / Alkaline / Instrument Only
<b>G450-11420</b>	LEL, O <sub>2</sub> , CO, H <sub>2</sub> S Sensors / Rechargeable (Includes Single Charger) / Instrument Only
<b>G450-11414</b>	LEL, O <sub>2</sub> , CO, H <sub>2</sub> S Sensors / Alkaline w/ Alkaline Smart Pump / Instrument Only
<b>G450-11465</b>	LEL, O <sub>2</sub> , CO, H <sub>2</sub> S Sensors / Rechargeable w/ Rechargeable Smart Pump / Instrument Only
<b>G450-11410E</b>	G450 ecoBump kit with alkaline G450 with LEL, O <sub>2</sub> , CO, and H <sub>2</sub> S sensors, standard accessories, push-button regulator, cylinder of test gas and foam lined carrying case.
<b>G450-11420E</b>	G450 ecoBump kit with rechargeable G450 with LEL, O <sub>2</sub> , CO, and H <sub>2</sub> S sensors, standard accessories, push-button regulator, cylinder of test gas and foam lined carrying case

## G450 ecoBump Kits

### Features:

- All standard accessories included
- 7 L Calibration gas (C 10 fitting)
- 1,200 psi
- Approx. 250 three second bumps
- Push button regulator
- ABS foam lined carrying case
- Considered non-hazardous when shipped ground within USA

**Monitors:** LEL, O<sub>2</sub>, CO, H<sub>2</sub>S

The alkaline G450 ecoBump kit includes everything needed for storing, protecting, and testing a four-gas confined space.





## G460

### Features:

- Exceptional HAZMAT and Confined Space performance
- Up to 6 channels of detection, including...
- PID sensor for direct reading of toxic VOCs
- Infrared (NDIR) sensors for CO<sub>2</sub> and combustible gas (0% LEL - 100% volume)
- Full 3-year warranty on Combustible, CO, H<sub>2</sub>S and CO<sub>2</sub> sensors and 5 years on the O<sub>2</sub> sensor\*
- Highly configurable smart sensor design
- Full featured, compact and rugged design



**Monitors:** C<sub>2</sub>H<sub>4</sub>O, Cl<sub>2</sub>, ClO<sub>2</sub>, CO, CO<sub>2</sub>, COCl<sub>2</sub>, Combustible (Catalytic), Combustible (Infrared), H<sub>2</sub>, HCl, HCN, HF, H<sub>2</sub>S, NH<sub>3</sub>, NO, NO<sub>2</sub>, O<sub>2</sub>, O<sub>3</sub>, PH<sub>3</sub>, PID (VOC), SiH<sub>4</sub>, SO<sub>2</sub>

\* O<sub>2</sub> sensor and unfiltered LEL sensors available with optional 2-year warranty

Part No	Description
<b>G460-1D03700020</b>	O <sub>2</sub> , cc LEL, COSH, PID Sensors / NiMH Battery / 0-2000 PID
<b>G460-0D01026120</b>	O <sub>2</sub> , ir LEL, CO, H <sub>2</sub> S Sensors / NiMH Battery / NIDR
<b>G460-0D03006420</b>	O <sub>2</sub> , ir LEL, COSH, CO <sub>2</sub> Sensors / NiMH Battery / NIDR

## G888C

### Features:

- Monitor includes motion alert (man-down) warning
- LED flashlight standard
- Datalogging standard
- Highly configurable smart sensor design
- 300 m range wireless (if specified)
- Full featured, compact and rugged design



**Monitors:** CH<sub>3</sub>SH, C<sub>2</sub>H<sub>4</sub>O, Cl<sub>2</sub>, ClO<sub>2</sub>, CO, CO-H, CO<sub>2</sub>, COCl<sub>2</sub>, Combustible (Catalytic), Combustible (Infrared), H<sub>2</sub>, HCl, HCN, HF, H<sub>2</sub>S, NH<sub>3</sub>, NO, NO<sub>2</sub>, O<sub>2</sub>, O<sub>3</sub>, PH<sub>3</sub>, SiH<sub>4</sub>, SO<sub>2</sub>

\* Requires RF wireless option.

Part No	Description
<b>G888C-130102000010</b>	5 year O <sub>2</sub> (lead free), 3 year cc LEL, CO, H <sub>2</sub> S includes calibration cap, cable, charging cradle and wall power adapter
<b>G888C-130102000011</b>	5 year O <sub>2</sub> (lead free), 3 year cc LEL <sup>+</sup> , CO, H <sub>2</sub> S with ISM 915 MHz RF *wireless, includes calibration cap, cable, charging cradle and wall power adapter

## G999C

### Features:

- Integrated pump
- Monitor includes motion alert (man-down) warning
- LED flashlight standard
- Datalogging standard
- Highly configurable smart sensor design
- 300 m range wireless (if specified)
- Full featured, compact and rugged design



**Monitors:** CH<sub>3</sub>SH, C<sub>2</sub>H<sub>4</sub>O, Cl<sub>2</sub>, ClO<sub>2</sub>, CO, CO-H, CO<sub>2</sub>, COCl<sub>2</sub>, Combustible (Catalytic), Combustible (Infrared), H<sub>2</sub>, HCl, HCN, HF, H<sub>2</sub>S, NH<sub>3</sub>, NO, NO<sub>2</sub>, O<sub>2</sub>, O<sub>3</sub>, PH<sub>3</sub>, \*\*PID (VOC), SiH<sub>4</sub>, SO<sub>2</sub>

\* Requires RF wireless option.

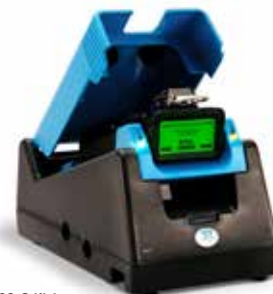
\*\* PID option requires G999P model.

Part No	Description
<b>G999C-130102000010</b>	5 year O <sub>2</sub> (lead free), 3 year cc LEL <sup>+</sup> , CO, H <sub>2</sub> S includes calibration cap, cable, charging cradle, wall power adapter, integrated pump, sample probe and tubing
<b>G999C-130102000011</b>	5 year O <sub>2</sub> (lead free), 3 year cc LEL <sup>+</sup> , CO, H <sub>2</sub> S with ISM 915 MHz RF *wireless, calibration cap, cable, charging cradle, wall power adapter, integrated pump, sample probe and tubing
<b>G999P-03030000006110</b>	5 year O <sub>2</sub> (lead free), 3 year COSH**, IR LEL includes calibration cap, cable, charging cradle, wall power adapter, integrated pump, sample probe & tubing
<b>G999P-030300000706110</b>	5 year O <sub>2</sub> (lead free), 3 year COSH**, PID (0-2,000 ppm), IR LEL includes calibration cap, cable, charging cradle, wall power adapter, integrated pump, sample probe and tubing

## DS400/DS404

### Features:

- Ability to cascade multiple docking stations
- Four test gas ports on the DS404 docking station
- No computer necessary for the operation of docking stations
- Automatic alarm testing
- Automatic charging
- Automatic record keeping
- Simple pass / fail indication
- Up to 2,000,000 records in memory
- Prints official calibration certificates



Part No	Description
<b>1450-401R</b>	DS400 Docking Station for G450/G460 / Single Cradle w/demand flow regulator
<b>1450-402R</b>	DS400 Docking Station for G450/G460 / Double Cradle (Instrument and Pump) w/demand flow regulator
<b>1450-406R</b>	DS400 Docking Station for G888/G999 / w/ regulator P/N 1419-216

## D-ReX Series

### Features:

- Point of Use, remote sensor or pump versions
- 4-20 mA, RS-485 (Modbus / RTU), 5 relays
- PoE (Modbus / TCP)
- Bluetooth® app and Config software



**Monitors:** Toxic and combustible gases

\* Contact PMG Representative for sensor configurations.

Part No	Description
<b>3612000</b>	PoU diffusion mode, 5 relays base unit (no sensor)
<b>3614000</b>	PoI remote monitoring, connector cartridge, 5 relays base unit (no sensor)
<b>3622000</b>	PoS extractive mode, pump, 5 relays base unit (no sensor)
<b>3624000</b>	PoS R/LIM extractive mode, pump, line integrity monitor, 5 relays base unit (no sensor)

## ZD22 Series

### Features:

- Expected sensor life of > 5 years
- High efficiency and low follow-up costs
- Available with display or blind (no display)



**Monitors:** O2

Part No	Description
<b>ZD22-701D</b>	Fixed Transmitter / Oxygen (O2) Sensor / Range 0-25% vol. / Display / 4-20 mA
<b>ZD22-702D</b>	Fixed Transmitter / Oxygen (O2) Sensor MK 435-1 / Range 0 - 2% vol. / Display / 4-20 mA
<b>ZD22-703D</b>	Fixed Transmitter / Oxygen (O2) Sensor MK 413-1 / Range 0 - 1,000 ppm / Display / 4-20 mA

## IR22

### Features:

- High efficiency and low follow-up costs
- Available with display or blind (no display)
- Available with 4-20 mA or RS485 (Modbus)



**Monitors:** CH4, C3H8, CO2, Combustible gases

Part No	Description
<b>IR22-804D</b>	Fixed Transmitter / Carbon dioxide (CO2) Sensor / Range 0 - 5% vol. / Display / 4-20 mA
<b>IR22-806D</b>	Fixed Transmitter / Carbon dioxide (CO2) Sensor MK 251-0 / Range 0 - 1% vol. / Display / 4-20 mA

## Dynagard 25 Series

### Features:

- Easy Installation
- Local display and horn / strobe
- Adjustable alarm points
- On-board relays for external controls
- 4-20 mA output



**Monitors:** O2

Part No	Description
<b>2210-022</b>	Includes ZD22 transmitter for detecting Oxygen (O2) / Resolution 0.1% vol. / Range 0-25% vol.
<b>2210-030</b>	Includes ZD21 transmitter for detecting Oxygen (O2) and GMA 41B single channel controller / Resolution 0.1% vol. / Range 0-25% vol.
<b>2210-031</b>	Includes ZD21 transmitter for detecting Oxygen (O2) and GMA 41B single channel controller (no power supply) / Resolution 0.1% vol. / Range 0 - 25% vol.

## GMA200 Series

### Features:

- A variety of transmitters can be connected for measurement of combustible, toxic gases / vapors and oxygen
- 8 relays, 6 are fully programmable menu driven relays
- Multiple relay configurations
- Fixed Controller with a Relay Module creates a powerful combination
- Flexible, reliable and economic
- SIL certification
- Compact system for DIN rail mounting



**Monitors:** Combustible, O2, Toxic gases and vapors

Part No	Description
<b>200MT-2</b>	Fixed Controllers / 2 Channels / 2 Amp / 14" x 12" x 6" / Red Strobe
<b>200MT-4</b>	Fixed Controllers / 4 Channels / 2 Amp / 14" x 12" x 6" / Red Strobe
<b>200MT-6</b>	Fixed Controllers / 6 Channels / 3.2 Amp / 14" x 12" x 6" / Red Strobe
<b>200MT-8</b>	Fixed Controllers / 8 Channels / 3.2 Amp / 14" x 12" x 6" / Red Strobe
<b>200MT-12</b>	Fixed Controllers / 12 Channels / 5 Amp / 14" x 12" x 6" / Red Strobe
<b>200MT-16</b>	Fixed Controllers / 16 Channels / 10 Amp / 14" x 12" x 6" / Red Strobe



# FIXED GAS DETECTION AND RESPIRATORY AIR MONITORS

## CC33

### Features:

- One of the fastest response times in the world
- Proprietary, high performance combustible gas sensor
- Expected sensor life of 5 years
- Operation/Service via magnetic rod
- 3 voltage free relay outputs (option)
- Explosion proof horn (optional)
- Non-intrusive Autocal® calibration
- Available in two housings:
- Die-cast aluminum
- Stainless steel



**Monitors:** Combustible gases and vapors

Part No	Description
<b>3300-41-002</b>	Fixed Transmitter / Methane (CH <sub>4</sub> ) Sensor / Aluminum housing / Display / 4-20 mA / with relay
<b>3300-41-012</b>	Fixed Transmitter / Methane (CH <sub>4</sub> ) Sensor / Stainless steel housing / Display / 4-20 mA / with relay

## RAM 4021

### Features:

- Continuous carbon monoxide (CO) monitor for compressed air
- Optional low hydrogen interference CO sensor (add "-H" to part number)
- Integrated dew point measurement (if specified)
- Meets OSHA monitoring requirements for grade D breathing air
- AutoCal® automatic calibration
- Available in CE or CSA marked models
- Dryer control relays (DPX model only)
- User-adjustable alarm points
- Dry contacts for remote horn and lights
- Internal, case-mounted horn
- LCD display



**Monitors:** CO Dew Point, O<sub>2</sub>

Part No	Description
<b>4021</b>	Carbon monoxide (CO) monitor
<b>4021-1</b>	Carbon monoxide (CO) and oxygen (O <sub>2</sub> ) monitor
<b>4021-DPX</b>	Carbon monoxide (CO) and dew point monitor for medical breathing air applications with dryer control relays

## EC28

### Features:

- Increased safety design to reduce installation cost in potentially hazardous locations
- Non-intrusive AutoCal® calibration adjustment
- Uses electrochemical detection principle
- Output signal: 4-20 mA
- Available with MODBUS

### Monitors:

Combustible gases and vapors



Part No	Description
<b>2811-707-004</b>	Fixed Transmitter / Carbon Monoxide (CO) Sensor / Range 500 ppm / Display / Alarm / Relay
<b>2811-720-004</b>	Fixed Transmitter / Hydrogen Sulfide (H <sub>2</sub> S) Sensor / Range 0-200 ppm / Display / Alarm / Relay
<b>2811-727-004</b>	Fixed Transmitter / Oxygen (O <sub>2</sub> ) Sensor / Range 0-25% vol. / Display / Alarm / Relay

## RAM 744

The RAM 744 is the ideal monitor for portable applications and where space is limited. It is mounted with the filtration system, allowing for rapid response and eliminating the possibility of sample lines becoming blocked or crimped.

All GfG Instrumentation RAM instruments satisfy the requirements of OSHA rule 29 CFR 1910.134 (d) (2) (ii) for carbon monoxide monitoring. They will also monitor Grade E air, generally specified for breathing air in cylinders (SCBA).

The compact, portable "air case" encloses the three-stage 25, 50 or 100 CFM filter panel with the RAM 744 CO monitor in a rugged carrying case. All models have quick-connect inlets and outlets.

Any GfG Instrumentation RAM instrument can be custom-configured to meet the needs of the end user's exact specifications.

**Monitors:** CO



Part No	Description
<b>744</b>	RAM instrument with standard (0 - 99 ppm) CO sensor (to be used with approved filter panel)
<b>9025-744</b>	25 CFM portable filter panel, maximum of 2 ports
<b>9050-744</b>	50 CFM portable filter panel, maximum of 4 ports
<b>9100-744</b>	100 CFM portable filter panel, maximum of 8 ports

### Leaders in Hand Protection & PPE

For nearly 40 years PIP has focused on developing, training and providing customers with innovative safety products that help keep workers safer, more comfortable and more productive.

Our five U.S. based manufacturing facilities enable us to provide safety solutions that are tailored to customer needs. These factories work with our team of specialists to ensure the highest level of product performance.



### Grippaz™ Skins

Extended Use Ambidextrous Nitrile Glove with Textured Fish Scale Grip - 6 Mil, Sizes: S-2XL

**67-256**



### MaxiFlex® Ultimate™

Seamless Knit Nylon / Elastane Glove with Nitrile Coated MicroFoam Grip on Palm & Fingers - Touchscreen Compatible, Sizes: XXS-3XL

**34-874**



### G-Tek®

Seamless Knit Polyester Glove with Nitrile Coated Foam Grip on Palm & Fingers - 15 Gauge, Sizes: XS-2XL

**34-315**



### G-Tek®

Seamless Knit Nylon Blend Glove with Polyurethane Coated Flat Grip on Palm & Fingers, Sizes: XS-2XL

**33-B125**



### MaxiFlex® Cut™

Seamless Knit Engineered Yarn Glove with Premium Nitrile Coated MicroFoam Grip on Palm & Fingers - Touchscreen Compatible, A2 cut, Sizes: XS-3XL

**34-8743**



### G-Tek® PolyKor®

Seamless Knit PolyKor® Blended Glove with Nitrile Coated Foam Grip on Palm & Fingers - Touchscreen Compatible; Sizes: XXS-2XL

**16-328**





## G-Tek® PolyKor®

Seamless Knit PolyKor® Blended Glove with Polyurethane Coated Flat Grip on Palm & Fingers - 21 Gauge - Touchscreen Compatible; A4 Cut; Sizes: XS-2XL

**16-541**



## G-Tek® PolyKor®

Seamless Knit PolyKor® Blended Glove with Nitrile Coated Foam Grip on Palm & Fingers - 21 Gauge - Touchscreen Compatible; Sizes: XS-2XL

**16-351**



## G-Tek® PolyKor®

Seamless Knit PolyKor® Blended Glove with Nitrile Coated Foam Grip on Palm & Fingers - Touchscreen Compatible; Sizes: XS-2XL

**16-348**



## G-Tek® PolyKor®

Seamless Knit PolyKor® Blended Glove with Nitrile Coated Foam Grip on Palm & Fingers - Touchscreen Compatible, A5 Cut; Sizes: XS-2XL

**555**



## G-Tek® PolyKor® X7™

Seamless Knit PolyKor® X7™ Blended Glove with Double-Dipped Nitrile Coated MicroSurface Grip on Full Hand - Touchscreen Compatible, A4 Cut, Sizes: S-2XL

**16-939**



## G-Tek® PolyKor®

Seamless Knit PolyKor® Blended Glove with D3O® Impact Protection and Nitrile MicroSurface Coated Palm & Fingers; Sizes: S-2XL

**16-MPT630**



## G-Tek® PolyKor®

Seamless Knit PolyKor® Blended Glove with D3O® Impact Protection and Nitrile MicroSurface Coated Palm & Fingers - 13 Gauge - Level 3 Impact/Puncture Protection; A4 Cut; Sizes: S-2XL

**16-MPT430**



## Knife Hawwk™

Seamless Knit Polykor Blended Glove with Foam Padded Palm and Sandy Nitrile Coated Palm & Fingers; Sizes: XS-2XL

**1CF7007N**



## Assurance®

Nitrile Coated Glove with PolyKor® Blended Liner and MicroFinish Grip on Palm & Fingers - 14"; Sizes: S-2XL

**56-586CR**



## G-Tek® PolyKor® X7™

Seamless Knit PolyKor® X7™ Blended Glove with NeoFoam® Coated Palm & Fingers - Touchscreen Compatible, A7 Cut; Sizes XS-2XL

**16-377**



## Kut Gard®

2-Ply DuPont™ Kevlar® Sleeve with Thumb Hole

**10-KSTO**





## HAND PROTECTION, WELDING, ELECTRICAL

### Ironcat®

Premium Grade Top Grain Cowhide Leather Drivers Glove with Split Cowhide Back - Keystone Thumb, Sizes: S-3XL

**9414**



### Ironcat®

Ironcat® Split Leather Welding Cape Sleeve, SIZES: M-4XL

**7000**



### PIP®

Economy Top Grain Sheepskin Leather Drivers Glove with Aramid Blended Lining - Keystone Thumb, A4 Cut, Sizes: S-3XL

**9110**



### Caiman®

9oz FR Cotton Coat / Jacket, Sizes: S-5XL

**3000**



### Boss®

Top Grain Goatskin Leather Drivers Glove with Hi-Vis Impact Protection and DuPont™ Kevlar® Blend Lining, Sizes: S-3XL

**9916**



### PIP®

PPE 2 Arc Flash Kit - 12 Cal/cm2 includes: Jacket; Overpant, Hard Hat, Arc Shield, Balaclava; Safety glasses; Carry Bag

**9150-52810**



### Ironcat®

Premium Top Grain Cowhide Leather MIG Welder's Glove with DuPont™ Kevlar® Stitching - 4" Red Band Top Cuff, Sizes: S-XL

**6000**



### Ironcat®

AR Premium Kidskin Leather TIG Welder's Glove with Aramid Lining and DuPont™ Kevlar® Stitching - Gauntlet Cuff, A4 Cut, Sizes: XS-2XL

**6144**



### NOVAX®

Class 0 Electrical Safety Kit (1 pair ESP Gloves-Black (150-0-11); 1 pair Goatskin Protectors (148-1000); 11-inch Nylon Glove Bag (148-2136)

**150-SK-0**

(Class 00, 1, 2, 3, 4 available)



### Ironcat®

FR Treated 100% Cotton Sateen Cape sleeves with Black/Gold Elastic Ends

**7070B**





## PIP®

ANSI Type R Class 2 Short Sleeve T-Shirt with 50+ UPF Sun Protection and Black Bottom Front, Sizes: S-8XL

**312-1250B**

(available in lime yellow, orange)



## EZ-Cool® Max

Evaporative Cooling Sleeve

**391-EZ275**

(available in lime yellow, black)



## PIP®

ANSI Type R Class 2 Two-Tone Eleven Pocket Mesh Surveyors Vest, Sizes: S-5XL

**302-0500M**

(available in lime yellow, orange, hi-viz red)



## EZ-Cool®

EZ-Cool Evaporative PVA Cooling Towel

**396-602**

(available in blue, pink, lime yellow)



## PIP®

ANSI Type R Class 2 Two-Tone Eleven Pocket Tech-Ready Mesh Surveyors Vest with Ripstop Black Bottom Front and "D" Ring Access, Sizes: S-5XL

**302-0650D**

(available in lime yellow, orange)



## EZ-Cool®

Evaporative Cooling Neck Wrap

**393-650**

(available in blue, pink, lime yellow)



## EZ-Cool®

ANSI Type R Class 2 Evaporative Cooling Vest

**390-EZ202**

(lime yellow)



## PIP®

ANSI Type R Class 3 Two-Tone Eleven Pocket Mesh Surveyors Vest, Sizes: S-5XL

**303-0500M**

(available in lime yellow, orange)



## THORZT™

**Sugar Free Solo Shots**

- Sugar free, caffeine and gluten free
- Proprietary electrolyte formula including sodium, potassium and magnesium
- Each solo shot makes 16.9 fl oz beverage
- Pack Qty: 50 packets per bag
- Ctn Qty: 10 bags of 50 packets

**SSSF**

(available flavors: orange, blue lemonade and tropical)



## THORZT™

**Freeze Shots**

- 10 ea/pk, 15 pks/cs

**ICEMIX**

**ICEMIX-SF (sugar free)**

(mixed flavors include: blue lemonade, lemon-lime, tropical, orange, wild berry, cherry punch, peach mango)



## PowerGrab™ Thermo

Hi-Vis Seamless Knit Acrylic Terry Glove with Latex MicroFinish Grip on Palm & Fingers, A2 Cut, Sizes: S-2XL

**41-1400**



## PowerGrab™ Thermo W

Seamless Knit Polyester Glove with Acrylic Liner and Latex MicroFinish Grip on Palm & Fingers, Sizes: S-2XL

**41-1430**



## G-Tek® PolyKor®

Seamless Knit Single-Layer PolyKor® / Acrylic Blend Glove with Double-Dip Latex MicroSurface Grip on Palm & Fingers, A4, Sizes: S-2XL

**41-8014**



## G-Tek® PolyKor®

Seamless Knit Single-Layer PolyKor® / Acrylic Blend Glove with Nitrile Foam Grip on Palm & Fingers - Touchscreen Compatible, Sizes: S-2XL

**41-8156**



## PIP®

ANSI Type R Class 3 Long Sleeve T-Shirt with 50+ UPF Sun Protection, Built-in Insect Repellent and Black Bottom Front, Sizes: S-5XL

**313-1375B**

(available in lime yellow)



## Bisley®

ANSI Type R Class 3 Reversible Puffer Jacket

**333M6350H**

(available in lime yellow, orange)



## Bisley®

ANSI Type R Class 3 Full Zip Hooded Sweatshirt with Sherpa Lining, Sizes: S-4XL

**323M6988T**

(available in lime yellow, orange)



## Bisley®

5-in-1 Class 3 Ripstop Jacket with Zip-Out Class 2 Inner Jacket, Sizes: S-5XL

**333M6375H**

(available in lime yellow, orange)



## PIP®

ANSI Type R Class 3 Quarter-Zip Pullover Sweatshirt with Black Bottom

**323-1330B**

(available in lime yellow, orange)



## PIP®

ANSI Type R Class 3 Ripstop Softshell Black Bottom Jacket, Sizes: S-5XL

**333-1550**

(available in lime yellow)





**Boss®**

Therm™ Heated Vest  
(one size), and Glove Liner

**300-HV100 (Vest)**

**399-HG20 (Glove Liner)**



**PIP®**

Heat Packs - Air Activated  
Hand Warmers, Orange

**399-HEATPACK**



**Boss®**

Wind Resistant Winter Balaclava

**364-1180**



**Zenon Ultra-Lyte™**

Rimless Safety Glasses and  
Anti-Scratch / FogLess® 3Sixty™  
Coating; Sizes: One Size

**250-14-0520 (Clear)**

**250-14-0521 (Gray)**



**Recon™**

Rimless Safety Glasses with Clear  
Temple, Clear Lens and Anti-Scratch  
/ FogLess® 3Sixty™ Coating

**250-32-0520**

(other shades available)



**Fortify™**

Rimless Safety Glasses with Gray  
Frame, Clear Lens, Foam Padding  
and Anti-Scratch / FogLess®  
3Sixty™ Coating

**250-54-0520**

(other shades available)



**Anser™**

Semi-Rimless Safety Glasses with  
Black Frame, Clear Lens and  
FogLess® 3Sixty™ Coating

**250-AN-10520**

(other shades available)



**WOMEN'S**

**PIP®**

ANSI Type R Class 2 Women's  
Contoured Vest with Solid  
Front, Mesh Back and  
Adjustable Waist, Sizes: S-2XL

**302-0312**



**PIP®**

ANSI Type R Class 3 Women's  
Contoured Two-Tone Eleven  
Pocket Surveyors Vest with  
Solid Front and Mesh Back,  
Sizes: S-3XL

**303-0513**

(available in lime yellow, orange)



**Bisley®**

ANSI Type R Class 3 Women's  
Contoured Fleece Pullover  
Sweatshirt, Sizes: S-3XL

**323W6818T**

(available in lime yellow, orange)

**Bisley®**

ANSI Type R Class 3 Women's Contoured  
Reversible Puffer Jacket

**333W6350H**

(available in lime yellow, orange)



## Traverse™

Industrial Climbing Helmet with Mips® Technology, ABS Shell, EPS Foam Impact Liner, HDPE Suspension, Wheel Ratchet Adjustment and 4-Point Chin Strap

**280-HP1491RM (Type II)**

**280-HP1491RVM (Vented, Type II)**

(both available in black, dark green, gray, hi-viz yellow, navy, orange, red, white, yellow)



## Traverse™

Polycarbonate eye wear protector for Traverse™. Quick connect system allows for fast attachment/detachment

**251-HP1491P (smoke gray)**



## Traverse™

Eye wear with quick connect system included. Passes ANSI Z87+. Polycarbonate, anti-scratch/anti-fog

**251-HP1491C (clear)**

**251-HP1491G (smoke gray)**



## Traverse™

Designed to fit any Traverse™ safety helmet with quick connect clips. Suitable for high impact situations, as well as general grinding applications. Polycarbonate, virgin resin. Pivoting blades allow face shield to lift up when not in use. Meets ANSI Z87.1+.

**251-HP1491PFS (clear)**



## Evolution® Deluxe 6151

Cap Style Hard Hat with HDPE Shell, 6-Point Polyester Suspension and Wheel Ratchet Adjustment

**280-EV6151 (Type I)**

(vented or non-vented available)



## Whistler™

Cap Style, HDPE Shell, 4-Point Textile Suspension, Ratchet Adjustment

**280-HP241R (Type I)**

(vented or non-vented available)



## Kilimanjaro™

Type II Full Brim Hard Hat with HDPE Shell, 4-Point Textile Suspension and Wheel Ratchet Adjustment

**280-HP642R (Type II)**



## Sonis® 1

Passive Ear Muff with Adjustable Headband - NRR 22, Size: OS

**262-AEB010-HB**



## Sonis® Compact

Cap Mounted Passive Ear Muff - NRR 25, Size: OS

**262-AEB30-CM**



## Sonis® 3

Full Brim Mounted Passive Ear Muff - NRR 28, Size: OS

**262-AEB040-EB**





## V1™

V1 Cap Mounted Passive  
Ear Muff - NRR 23; Size: OS

**263-VICM (Neon Green)**



## V2™

V2 Passive Ear Muff with Adjustable  
Headband - NRR 25; Size: OS

**263-V2HB (Neon Orange)**



## V3™

V3 Full Brim Mounted Passive  
Ear Muff - NRR 27; Size: OS

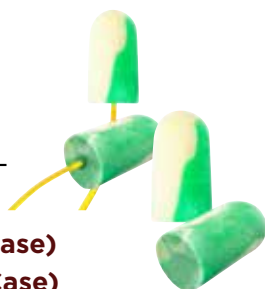
**263-V3FB (Neon Red)**



## Mega Bullet™ BioSoft™

Disposable Bio-Bases Foam Ear  
Plug with BioSoft™ Technology -  
NRR 32; Size: One Size

**BSF-30 (Corded - 10 Boxes/Case)**  
**BSF-1 (Uncorded - 10 Boxes/Case)**



## Food Pro Bullet™ BioSoft™

Metal Detectable Disposable Bio-  
Based Corded Foam Ear Plug with  
BioSoft™ Technology - NRR 32;  
Size: One Size

**BSF-D (Corded - 10 Boxes/Case)**



## Pinchfit™ BioSoft™

Disposable Bio-based Foam Ear  
Plug with Pinchfit™ Technology -  
NRR 32; Size: One Size

**PF-1 (Uncorded - 10 Boxes/Case)**  
**PF-30 (Corded - 10 Boxes/Case)**



## Food Pro Pinchfit™ BioSoft™

Metal Detectable Disposable Bio-  
based Corded Foam Ear Plug with  
Pinchfit™ Technology - NRR 32;  
Size: One Size

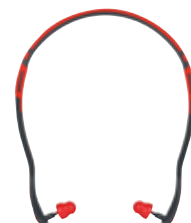
**PF-D (Corded - 10 Boxes/Case)**



## PIP®

Banded Ear Plugs - NRR 24

**267-HPB410**



## Mega Bullet™

Disposable Soft Polyurethane Foam  
Ear Plugs - NRR 32

**267-HPF210 & 267-HPF210C**  
(available in uncorded & corded)



## EZ-Twist™

Disposable Soft Polyurethane Foam  
Ear Plugs - NRR 30

**267-HPF610 & 267-HPF610C**  
(available in uncorded & corded)



## PIP®

PIP Reusable TPR  
Ear Plugs - NRR 27

**267-HPR410C**  
(Corded - 10 Boxes/Case)



## Force Typhoon™

8 Half-Mask Respirator

**272-RPRF88 (OS)**



## Dynamic™

Standard N95 Disposable  
Respirator - 20 Pack (white)

**270-RPD153N95 (OS)**



## METGUARD® Metatarsal Protector

Polycarbonate attaches to the top of your footwear with existing laces or optional straps.

#METGUARD - standard

#METGUARDPRO - extended

#METSTRAP - straps. Sizes: One size



**METGUARD (Pair)**

## TURBOTOE® Steel Toe Cap Overshoes

Waterproof, flexible PVC. Color coded for size. Meets impact rating 75Lb per ASTM F2412/F2413. Certified CE & CSA Standard Z334-14 protective footwear. Sizes: Mens 2-16; Womens 4-13



**TT (Pair)**

## TURBOTOE® Composite Toe Cap

Flexible, pliable PVC. Non-conductive, lightweight composite toe. Wear over low-heel, dress, running shoes and most boots. Sizes: Mens 4-14; Womens 6-13



**TTCOMP (Pair)**

## TOES2GO® Steel Toe Cap Overshoes

Flexible waterproof PVC, adjustable straps. Color coded for size. Meets impact rating 75Lb per ASTM F2412/F2413. Certified CE & CSA Standard Z334-14 protective footwear. Sizes: Mens 2-16; Womens 4-13



**T2G (Pair)**

## TOES2GO® Composite Toe Cap

Flexible, pliable PVC. Non-conductive, lightweight composite toe. Wear over low-heel, dress, running shoes and most boots. Sizes: Mens 2-13; Womens 4-13



**T2GCOMP (Pair)**

## MEM Anti-Fatigue Insoles

Memory foam compresses for custom support, molded, for work shoes and boots.

#MEM - standard anti-fatigue style

#MEMESD - with anti-static ESD threads

Sizes: Mens sizes 3-14; Womens 5-13



**MEM (Pair)**

## ARMOR-STEP Puncture Resistant

Molded insoles with heel & arch support. Stainless steel plate protects from accidental puncture wounds. Meets minimum force 270lbs per ASTM F2413.

Sizes: Mens sizes 5-15; Womens 7-15



**ARMOR-STEP (Pair)**

## MIDCLEAT® Ice Traction Cleats

Superior grip & stability.

Replaceable durable ice cleats.

#MIDCLEAT-100-00 - steel cleats

#MIDCLEAT-100B-00 - non-sparking brass. Sizes: One size

**MIDCLEAT-100-00 (Pair)**



## IMPACTO Sasquatch

Sandal style ice cleats fits snugly over most shoes and boots. Thread pattern durable sole. Heat treated hexagonal shaped cleats. Adjustable easy on-off straps with hook and loop closure in the heel and toe area. Sizes: Mens 6.5-14.5; Womens 8.5-12

**SASQUATCH (Pair)**





## IMPACTO Bigfoot

Fits over footwear including steel toe boots and most winter boots. Drawstring top. Waterproof uppers and reinforced taped seams. Works with flat or heeled boots and shoes. Extra wide opening for easy on/off. Sizes: Mens 6-12; Womens 10-13

**BIGFOOT (Pair)**



## SLKGRIP Anti-Slip Overshoes

Superior traction, grip and stability. Fits snugly over most shoes and boots. Sizes: Mens 4-16; Womens 5-12

**SLKGRIP (Pair)**



## BLACKMAXX Anti-Vibration

Knit fabric with vibration damping lightweight cellular chloroprene pad in the palm & fingers. BLACKMAXX - full finger style BLACKMAXX BLADE - Anti-slash ANSI A5. Sizes: M-XL

**BLACKMAXX (Pair)**



## The Original Dryrigger

For oil and gas extraction, well drilling, mining, mechanics and similar applications. Helps prevent hairline fractures, bruising, pinched fingers, severe cuts, abrasions and crushing injuries. Sizes: S-3XL

**WGRIGG (Pair)**



## Anti-Vibration Air Glove®

Synthetic leather, mesh back, silicone dots in the palm and fingers. Air padded palm, thumb & fingers. Meets ANSI/ ISO 10819. Sizes: XS-2XL

**BG408 (Pair)**



## Anti-Impact Gloves

Nylon back, soft pearl leather palm. VEP pad in the palm. Half finger. Sizes: S-2XL

**401-30 (Pair)**



## Anti-Impact Glove Liners

Four way stretch polycotton. VEP pad in the palm protects from vibration and impact. Sizes: XS-XL

**501-00 (Pair)**



## Thermo Wrap Wrist Support

Sizes: XS/S, M, L/XL

**TS226 (Each)**



## IMPACTO Kneeling Mats

Resilient 1" closed-cell foam, waterproof. For use on steel, concrete, gravel, grating, wet & more. Self-extinguishing; Meets the 49 CFR 571.302 Flammability Standard. #MAT5000 - 4"x6" #MAT5040 - 8"x16" #MAT5050 - 14"x21"

**MAT5050 (Each)**



## Hard Shell Knee Pads

Co-polymer foam, hinged hard shell cover, double elastic straps. #840-00 - without hard shell cover, single strap

**825-00 (Pair)**



## Gel Comfort Knee Pads

All-terrain use, sewn-on cover, elevated co-polymer facing with side threads. #865-00 - extended shin area #864-00 - short style

**864-00 (Pair)**





## Safety is Our Standard

Founded in 1906, Justrite is a leading manufacturer of storage, handling and workplace safety products. Our flagship product is the Justrite Safety can.

Today, Justrite Safety Group is a growing family of industrial safety companies. With ten different portfolio brands, Justrite Safety Group provides essential safety products needed to protect your workers and workspace.

We are united by our deep workplace safety knowledge, real-world experience, and our commitment to protecting people, property and the planet.



## Standard Safety Cabinets

30 Gallon, 1 Shelf, 2 Doors, Self Close, Flammable Cabinet, Sure-Grip® EX, Yellow

**893020**

45 Gallon, 2 Shelves, 2 Doors, Self Close, Flammable Cabinet, Sure-Grip® EX, Yellow

**894520**

60 Gallon, 2 Shelves, 2 Doors, Self Close, Flammable Cabinet, Sure-Grip® EX, Yellow

**896020**



## Fire Safety Cabinet

16 Gallon Fire Cabinet, 1 Shelf, 2 Doors, Manual Close, Space Saver Tower, Yellow

**1906XLEGS**



## Steel Safety Cans

**Type I:** Flame Arrester, Funnel

**Type II:** Metal Hose, AccuFlow™



Part No	Type	Gallons	Description
<b>UI25FS</b>	Type I	2.5	For Flammables, Red
<b>UI50FS</b>	Type I	5	For Flammables, Red
<b>UI25FSY</b>	Type I	2.5	For Diesel, Yellow
<b>UI50FSY</b>	Type I	5	For Diesel, Yellow
<b>7125110</b>	Type I	2.5	For Flammables, Red
<b>7150110</b>	Type I	5	For Flammables, Red
<b>7125210</b>	Type I	2.5	For Diesel, Yellow
<b>7150210</b>	Type I	5	For Diesel, Yellow
<b>7225120</b>	Type II	2.5	5/8" Hose, For Flammables, Red
<b>7250120</b>	Type II	5	5/8" Hose, For Flammables, Red
<b>7225220</b>	Type II	2.5	5/8" Hose, For Diesel, Yellow
<b>7250220</b>	Type II	5	5/8" Hose, For Diesel, Yellow
<b>7225130</b>	Type II	2.5	1" Hose, For Flammables, Red
<b>7250130</b>	Type II	5	1" Hose, For Flammables, Red
<b>7225230</b>	Type II	2.5	1" Hose, For Diesel, Yellow
<b>7250230</b>	Type II	5	1", For Diesel, Yellow



## Oily Waste Cans

6 Gallon, Steel Oily Waste Can, Hands-Free, Self-Closing Cover, Red

**09100**



2 Gallon, Countertop Oily Waste Can for Small Wipes and Swabs, Red

**09200**



## Cylinder Cabinet

8 Horizontal LPG and 10 Vertical Compressed Gas Cylinder Tanks, Gas Cylinder Cabinet Locker Combo, Aluminum

**23008**



## Plastic Pallets

Plastic Pallet With Drain, Yellow

**1620 (2 Drum)**

**1645 (4 Drum)**



## IBC Containment

400 Gallon Sump Capacity, IBC Containment Unit with Polyethylene Platform, With Drain, Yellow

**1683D**



## Lab Pack

30 Gallon, Metal Lever-Lock, Lab Pack Open Head Plastic Barrel Drum, Blue

**1601MB**



## Rigid-Lock Quickberm

10' x 10' x 12", 745 Gallon Spill Capacity, Drive Over Berm, Rigid-Lock QuickBerm®, Black

**28519**



## Absorbents

PetroPad™ Spill Pad, Large 35.8" x 0.63" x 53.9". Solidifies incidental oil spills and leaks to prevent ground contamination.

**83986**

(available in five sizes)



## Aerosolv® Aerosol Can Disposal Systems

Green initiatives are simple when companies can easily convert used standard sized aerosol cans from hazardous waste into non-hazardous recyclable steel. The Aerosolv system is an EPA compliant solution that easily mounts onto user's thirty or fifty-five gallon drum and useful for a wide array of applications. The Aerosolv Super System boasts all the same features as the base model but adds greater vapor reduction, a tabulator for clear use tracking and a padlock for added security.

Item No	Description	CA Prop 65
<b>28202</b>	Aerosolv Standard Recycling System	⚠
<b>28223</b>	Color changing activated carbon cartridge (2pk)	-
<b>28224</b>	Color changing combination coalescing/carbon filter	-

Item No	Description	CA Prop 65
<b>28230</b>	Aerosolv Super System with tabulator	-
<b>28228</b>	Color changing combination coalescing/carbon cartridge with auto shut-off valve	-
<b>28229</b>	Color changing activated carbon cartridge (2pk)	-

## Outdoor Ashtray Stands

4 Gallon Plastic Outdoor Ashtray, Original Smoker's Ceasefire®



**26800D (Deco Black)**    **26800T (Terra Cotta)**  
**26800B (Adobe Beige)**    **26800 (Gray)**

10 Pack Disposable Bucket Liner for Outdoor Ashtray, Smoker's Ceasefire® Cigarette Butt Receptacles

**26827**



## Cable Protectors

5-Channel Linebacker® Cable Protector for 1.35" Cables, Load Capacity per Axle - 40,300 lbs; Load Capacity per Tire - 20,150 lbs

**CP5X125-Y/O**



2-Channel Fastlane® Drop-Over Cable Protector for 1" Lines ; Load Capacity per Axle - 2,100 lbs; Load Capacity per Tire - 1,050 lbs

**FL2X1.75-O**

(available in orange, yellow black)



Quick Cable Hook Overhead Hanging Cable Protector

**CHQUICKHOOK-O**



## Wheel Chocks

General-Purpose Utility Wheel Chock, 30,000 lbs Load Capacity, 27-35" Tires

**UC1700**



Heavy-Duty Wheel Chock, 65-105" Tires, 275 Ton Capacity

**MC3010**



General-Purpose Utility Wheel Chock, 70,000 lbs Load Capacity, 32-46" Tire

**UC1500-6**



General-Purpose Rubber Wheel Chocks w/ Cored Bottom, Pair, Trucks and Trailers

**RC815-P**



56" Aviation Wheel Chock for Over-Sized Aircraft w/ Locking Rope

**AC6856-LR**



## Ground Protection

AlturMAT® Ground Protection Mat, 120 Ton Load Capacity

**AM38 (3'x8', Black)**

**AM36 (3'x6', Black)**

**CM48 (4'x8', Clear)**



SafetyTech® Outrigger Pad, 30 Ton Load Capacity

**PAD24241 (24"x24")**



## Whips (Custom Whips available)

General-Purpose 10' Lighted Warning Whip w/ Quick Disconnect Base 12" Orange Flag White X

**FS10XL-QD-O**



General-Purpose Lighted Warning Whips w/ Telescoping Pole

**TPCWHP15XL-16-O**



General-Purpose 5' Non-Lighted Warning Whip w/ Threaded Hex Base 12" Orange Flag White X

**FS5X-O**



General-Purpose 8' Non-Lighted Warning Whip Split Pole w/ Quick Disconnect Base 16" Orange Flag White X

**FS8X-SPQD-16-O**



## Vehicle Motion Safety

Black/Yellow Parking Curb, Park-It®

**GNRS1610YB (6')**

**GNRS1410YB (4')**



Vehicle Identification Light, 24" x 16," Rectangular

**LUN24X16**

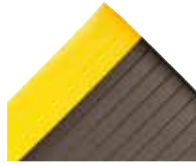




## SAFETY MATTING

Anti-Fatigue Mats Airug® 410;  
Available in 3/8" & 5/8" thickness;  
Colors: Black; Black/Yellow; Gray

**410**  
(available in multiple sizes)



Anti-Fatigue Workstation Mat  
Cushion Trax® 479; 9/16" thick  
Colors: Black; Black/Yellow; Gray

**479**  
(available in multiple sizes)



Anti-Fatigue Mat Saddle Trax® 979,  
1" thickness  
Colors: Black; Black/Yellow; Gray

**979**  
(available in multiple sizes)



Rubber Scraper Entrance Mat Soil  
Guard™ 340; 1/4" thickness  
Color: Black

**340**  
(available in multiple sizes)



Drainage Anti-Fatigue Mat Sanitop®  
562, 1/2" thickness  
Color: Black

**562**  
(available in multiple sizes)



Anti-Fatigue Mat Cushion-Stat™ W/  
Dyna-Shield® 825, 3/8" thickness  
Colors: Black; Black/Yellow; Gray

**825**  
(available in multiple sizes)



Master Guard™ Logo is the  
ultimate heavy-duty indoor/  
outdoor logo mat. With 54 ounces  
of needle-punch yarn per square  
yard and a stylish berber carpet  
surface, Master Guard™ Logo  
promotes your brand or message  
in the heaviest traffic areas.  
Colors: several color options



**373 Custom Logo Mat**  
(available up to 13' wide and 75' long)

Superior Impact™ logo matting is a multi-  
functional entrance mat that stops dirt and  
debris while adding aesthetic appeal and  
promotes your brand/message. The mats are  
printed with a state-of-the-art dye-injection  
process that is entirely computer controlled.  
Colors: several color options

**193 Custom Logo Mat**  
(available in multiple sizes)



## SAFETY SHOWERS AND EYEWASH

16 Gallon Portable Self-Contained  
Hughes Eyewash Station,  
Gravity-Fed

**16GFEW**



Floor Mount, Closed ABS Bowl,  
Hughes Combination Shower,  
Stainless Steel Pipe, Bottom Inlet

**18GS45G**



15 Gallon, Portable Self-Contained  
Hughes Eyewash Station,  
Pressurized

**15GEW**



Floor Mount, Closed ABS Bowl,  
Freeze Protected Hughes  
Combination Shower, Galvanized  
Pipe, 240V

**H5G45G-2H**

30 Gallon, Portable Hughes  
Self-Contained Safety Shower with  
Eye/Face Wash, Mobile

**40K45G**



528 Gallon, Hughes Emergency  
Tank Shower with Eye/Face Wash,  
Galvanized Steel Frame, 110V

**QS2000**



Pedestal Mount, Closed ABS Bowl,  
Hughes Eye/Face Wash,  
Galvanized Pipe

**45GP**

Wall Mount, Hughes Drench Shower,  
Galvanized Pipe

**23GH**



528 Gallon, Portable Hughes  
Self-Contained Safety Shower,  
Mobile, Immersion Heated, 100V GP

**MHW2000-1**





## OSHA Signs

OSHA Danger Safety Sign: Confined Space - Enter By Permit Only, 10x14 Aluminum

**MCSP134VA**

(other material/sizes available)



OSHA Danger Safety Sign: Construction Area - Keep Out, Plastic 10x14

**MADM014VP**

(other material/sizes available)



OSHA Notice Safety Sign: Safety Glasses Required In This Area, Plastic, 14x20

**MPPA802VP**

(other material/sizes available)



OSHA Caution Safety Sign: Personal Protective Equipment Required Beyond This Point, Adhesive Vinyl 10x14

**MPPA656VS**

(other material/sizes available)



## Safety Tags

OSHA Danger Safety Tag: Out Of Service, Plastic, 5pk with hanger

**MDT246PK**

(Available in Spanish. Other material & package options available.)



OSHA Danger Safety Tags: Locked Out - Do Not Operate, Plastic, 5pk with hanger

**MLT407PTK**

(Available in Spanish & French. Other material & package options available.)



Safety Tag: Inspection Record, Plastic 5 pk with Hanger

**TRS307PTP**

(Available in Spanish & French. Other material & package options available.)



Safety Tag: Emergency Shower & Eye Wash Test Record - Inspect This Unit Carefully Before Signing Inspection Card, Cardstock, 25pk

**FRMGT207CTP**

(Available in Spanish & French. Other material & package options available.)



OSHA Danger Tags By-The-Roll: Locked Out Do Not Operate, 100 per roll

**TAR416**

(available in Spanish & French)



OSHA Caution Tags By-The-Roll: Barricade Tag, 100 per roll

**TAR160**

(available in Spanish & French)



## Custom Boards

Create a clearly identified place for everything to reduce clutter, accidents, and costs.

- Quality custom designed storage systems for tools
- Durable board with tool mounting hardware included
- Work directly with an Accuform graphic artist to create a shadow board that is perfect for you
- This 5S shadow board can be used as a tool board, broom station, or more

### Custom Boards



Digi-Day® Electronic Scoreboards: This Department Has Worked \_ Days Without An OSHA Recordable Injury

**SCK111**





**Meltblown Technologies (MBT)** is an industrial sorbent manufacturer that makes high quality pads, rolls, spill kits, and other essential absorbents. With sorbents that are both versatile and efficient, they are capable of handling the toughest spills with ease. From universal to specialized absorbents, MBT ensures that each product is crafted to the highest standards, ready to meet the stringent requirements of various industrial and environmental protocols. With MBT, you are equipped with reliable solutions that keep your workplace productive and slip or trip-free, day in and day out.

## Gray Dimpled Universal Pads and Rolls

Dimpled meltblown polypropylene sorbents are single-layer, economical sorbents. We pass this media through our thermal bonder, which ties down loose fibers. Dimpled sorbents are also perforated, which promotes waste minimization.

Item #	Description	Size	Abs/Pkg	Pkg Qty
GDM100	Gray Dimpled Heavyweight Pads	15" x 18"	25.2 Gal	100
GDM200	Gray Dimpled Lightweight Pads	15" x 18"	25.2 Gal	200
GDML100	Gray Dimpled Mediumweight Pads	15" x 18"	20.6 Gal	100
GDM150	Gray Dimpled Heavyweight Rolls	30" x 150'	50.5 Gal	1



## Gray Fine Fiber Universal Pads and Rolls

Fine fiber meltblown polypropylene sorbents have a soft, super-absorbent fiber that resembles tissue paper. We thermally bond a thin layer to each side of our standard, coarse-fiber, meltblown polypropylene. These composites absorb quickly, remove the sheen, and grip cement floors.

Item #	Description	Size	Abs/Pkg	Pkg Qty
GFMF100	Gray Dimpled Heavyweight Pads	15" x 18"	25.2 Gal	100
GFMFL100	Gray Dimpled Middleweight Pads	15" x 18"	20.6 Gal	100
GFMF150	Gray Dimpled Heavyweight Rolls	30" x 150'	50.5 Gal	1
GFMFL150	Gray Dimpled Mediumweight Rolls	30" x 150'	41.3 Gal	1



## Gray SpunBond Universal Pads and Rolls

Spunbond meltblown polypropylene sorbents have an exceptionally strong, ultra-light nonwoven that resembles polyester. This fabric's high level of tensile strength and durability does not hinder its absorption capabilities. Thicker fluids penetrate the spunbond membrane and saturate the highly absorbent meltblown center layer.

Item #	Description	Size	Abs/Pkg	Pkg Qty
GSMS100	Gray Spunbond Heavyweight Pads	15" x 18"	19.6 Gal	100
GSMS200	Gray Spunbond Lightweight Pads	15" x 18"	19.6 Gal	200
GSMS150	Gray Spunbond Heavyweight Rolls	30" x 150'	39.3 Gal	1



## Gray SpunBond Fine Fiber Sorbent Rolls

Our industrial spunbond/fine fiber mats are great for hiding fluid stains and footprints. The stiff, durable, spunbond side faces up, and the soft, tacky, fine fiber side goes down. Perforated for ease of use, tear off what you need. Lay it down in walkways or in front of workstations and get back to work...Safely!

Item #	Description	Size	Abs/Pkg	Pkg Qty
GSMF300	Gray Spunbond Lightweight Rolls	30" x 300'	67 Gal	1



## White Dimpled Oil Only Pads and Rolls

Dimpled meltblown polypropylene sorbents are single-layer, economical sorbents. We pass this media through our thermal bonder, which ties down loose fibers. Dimpled sorbents are also perforated, which promotes waste minimization.

Item #	Description	Size	Abs/Pkg	Pkg Qty
WDM100	White Dimpled Heavyweight Pads	15" x 18"	25.2 Gal	100
WDM200	White Dimpled Lightweight Pads	15" x 18"	25.2 Gal	200
WDM150	White Dimpled Heavyweight Rolls	30" x 150'	50.5 Gal	1



## White Fine Fiber Oil Only Pads and Rolls

Fine fiber meltblown polypropylene sorbents have a soft, super-absorbent fiber that resembles tissue paper. We thermally bond a thin layer to each side of our standard, coarse-fiber, meltblown polypropylene. These composites absorb quickly, remove the sheen, and grip cement floors.

Item #	Description	Size	Abs/Pkg	Pkg Qty
WFMF100	White Fine Fiber Heavyweight Pads	15" x 18"	25.2 Gal	100
WFMFL100	White Fine Fiber Middleweight Pads	15" x 18"	20.6 Gal	100
WFMF150	White Fine Fiber Heavyweight Rolls	30" x 150'	50.5 Gal	1
WFMFL150	White Fine Fiber Mediumweight Pads	30" x 150'	41.3 Gal	1



## White Oil Only Pads and Rolls

Meltblown standard oil-only sorbents are typically used to skim oil off of water. The open fiber construction draws hydrocarbon-based fluids into the center of the pads and/or rolls while repelling water. This type of media is our most economical family of pads and rolls, yet it absorbs quicker and more than the other product families.

Item #	Description	Size	Abs/Pkg	Pkg Qty
WM100	Standard White Heavyweight Pads	15" x 18"	28 Gal	100
WM150	Standard White Heavyweight Rolls	30" x 150'	56.1 Gal	1



## White SpunBond Oil Only Pads and Rolls

Spunbond meltblown polypropylene sorbents have an exceptionally strong, ultra-light nonwoven that resembles polyester. This fabric's high level of tensile strength and durability does not hinder its absorption capabilities. Thicker fluids penetrate the spunbond membrane and saturate the highly absorbent meltblown center layer.

Item #	Description	Size	Abs/Pkg	Pkg Qty
WSMS100	Spunbond Heavyweight Pads	15" x 18"	19.6 Gal	100
WSMSL100	Spunbond Mediumweight Pads	15" x 18"	16 Gal	100
WSMS150	Spunbond Heavyweight Rolls	30" x 150'	39.3 Gal	1
WSMSL150	Spunbond Mediumweight Rolls	30" x 150'	32.1 Gal	1



## MBT Polypropylene Absorbent Socks

MBT absorbent socks can be used in numerous ways. Our general socks protect drains and keep fluids from seeping into walkways and oil-only socks are used to skim oil off of water and to keep water from entering doorways. Industrial absorbent socks are ideal for cleaning up spills around machine bases, equipment as well as chemical spills. Our absorbent polypropylene socks soak up oil, coolant, solvents, water, and aggressive chemicals.

Item #	Description	Size	Abs/Pkg	Pkg Qty
<b>General Purpose - Gray</b>				
GPS348-30	Universal Absorbent Sock	3" x 4'	25.2	30
<b>Oil Only - White</b>				
OS348-30	Oil Only Absorbent Sock	3" x 4'	25.2 Gal	30



## MBT Polypropylene Absorbent Pillows

MBT absorbent pillows are placed underneath steady leaks. These high-capacity sorbents do not need to be changed out often. Depending on the leaking fluid, choose between hazmat, general purpose, and oil only absorption capabilities. Place pillows in tight spaces between machines to catch splashes or overspray.

Item #	Description	Size	Abs/Pkg	Pkg Qty
<b>General Purpose - Gray</b>				
GPP1818-10	Universal Absorbent Pillow	18" x 18" x 2"	9.9 Gal	10
<b>Oil Only - White</b>				
OSP1818-10	Oil-Only Absorbent Pillow	18" x 18" x 2"	9.9 Gal	10





## Truck Bag Spill Kits

Truck spill kits provide quick emergency response to small spills. Be ready for any spill, this clear bagged kit fits easily behind the seat for safe storage.

Item #	Gal/Abs	Pkg Qty	Includes
GPSK-TRK	8.7 Gal	1	20-15"x18" pads, 3-3"x48" socks, 1-pair goggles, 1-pair gloves, 1-disposal bag with tie, packaged in vinyl zipper bag
OSSK-TRK	8.7 Gal	1	



## 20 Gallon Container Spill Kits

20 Gallon spill kits are portable, lightweight container kits for fast response to small spills. Absorb any type of spill fast with all the best MBT sorbents for quick response.

Item #	Gal/Abs	Pkg Qty	Includes
GPSK-20	15 Gal	1	4-3"x48" socks, 25-15"x18" pads, 2-18"x18" pillows, 3-disposal bags with ties, 1 pair goggles, 1-pair nitrile gloves, packaged in 20 gallon Labpack
OSSK-20	15 Gal	1	



## 30 Gallon Overpack Spill Kits

30 Gallon spill kits are tough, secure screw top spill kits are reusable and ideal for small to medium spills. A kit for everyday spills or absorb any type of spill fast with quality MBT sorbent.

Item #	Gal/Abs	Pkg Qty	Includes
GPSK-30	36 Gal	1	25-15"x18" pads, 6-3"x12' socks, 6-18"x18" pillows, 3-disposal bags, 1 pair goggles, 1-pair nitrile gloves, 1-Emergency Response Guidebook
OSSK-30	36 Gal	1	



## 65 Gallon Overpack Spill Kits

Our MBT 65-gallon Overpack Spill Kits have all the absorbents you need to clean up medium to large spills, packed to the top to give you the spill protection you need.

Item #	Gal/Abs	Pkg Qty	Includes
GPSK-65	63 Gal	1	100-15"x18" pads, 7-3"x12' socks, 7-18"x18" pillows, 5-disposal bags, 1 pair goggles, 1-pair nitrile gloves, 1-Emergency Response Guidebook
OSSK-65	63 Gal	1	



## Sky-X-Stand PRO-10/200 Portable Anchor Points & Restricted Space Davit Systems

### Restricted Space Davits

The Pro-10/200 Restricted Space Davits allow you to place fall protection anchors where you need them with minimal disruption to work place layouts and operations. Free standing portable and permanently installed options allow you to pick the solution that is best suited to your facility's individual needs.

### Cube Systems and Accessories

Cube Systems utilize a concrete filled steel box as ballast to support a davit of 13-29 ft tall with a 10 ft anchor point boom reach. A rail can be attached to multiple davits on one cube base or spanned over multiple cube bases to provide overhead anchor points.

With a variety of davit options available, the Pro-10/200 cube systems can accommodate a variety of worksite conditions.



## Exosphere Anchor System All Terrain 4x4



### Key Features:

- Telescopic anchor point up to 42'
- 2 individual foldable anchor arms
- 360° rotational arms with locking positions
- Wireless remote control (driving and hydraulic components)
- Four heavy-duty leveling jacks
- Confined space rescue capabilities
- Gasoline and propane fueled options
- Storage compartment for tools, devices, taglines etc.
- Rescue kit available to mount 2 SRL-R devices
- Set up within minutes

*Other sizes available.*



Part No	Description
<b>70764</b>	All Terrain 4x4 Exosphere Anchor System (Gasoline), 38' mast (42' anchor point height)
<b>70924</b>	All Terrain 4x4 Exosphere Anchor System (Propane), 38' mast (42' anchor point height)

## Exosphere Anchor System Highway Trailer



### Key Features:

- Telescopic anchor point up to 42'
- 2 individual foldable arms
- 360° rotational arms with locking positions
- 12V electric/hydraulic
- Confined space rescue capabilities
- Set up within minutes
- Highway towable  
(registerable for road use)

*Other sizes available.*

Part No	Description
<b>70726</b>	Highway Towable Trailer Exosphere Anchor System, 38' mast (42' anchor point height)

## Para-Stair Access Stair Systems



### Key Features:

- 30° to 60° operating range
- Self leveling design
- Lightweight
- 4 step to 40 step
- Wide and narrow tread widths
- Heavy-duty, non-slip, UV stabilized polyurethane plastic tread
- Maximum capacity of 2 workers with maximum of 315 lbs each or 630lbs combined
- Handrails both sides

*Other sizes available. Contact PMG for sizing guides.*



## About Us

PMG Safety was established in 2000 with the goal of building long-term relationships with our valued suppliers, channel partners and end user customers. Fast forward to 2025; we have field coverage in 25 states and continue growing our best-in-class safety portfolio.

PMG Safety is a team of Manufacturers' Rep Agents dedicated to providing safety education, along with product and service solutions to the Construction, Industrial, Utility, Transportation, Government and Food Processing markets.

## Value Added Services

## Fall Protection

Awareness Demos / Site Assessments / Training Services

## Gas Detection

## Portable / Fixed / Respiratory Air Monitors

## PPE Assessments

## Hand & Arm Protection / Above the Neck / Workwear

## Workplace Safety Surveys

Chemical Storage / Spill Containment / Eyewash  
Matting / Safety Identification (Signage)



**pmg-safety.com**

For any inquiries, email: [sales@pmg-safety.com](mailto:sales@pmg-safety.com)